



# Cricut Explore Air 2



## Class Agenda

Where is the Cricut Software?

Sign up and Sign in  
Plug-In Download  
Tour

Create a design by inserting

An image

A shape

Text

Uploading a design

Practice slicing and welding

Attaching =  
Grouping

Saving and Opening

2600 Harnish Drive  
Algonquin, IL 60102  
847-458-6060  
www.aapld.org

Mon-Thu: 9am - 9pm  
Fri: 9am - 6pm  
Sat: 9am - 5pm

## Cricut Software:

Cricut software is currently found on the Cricut website (with a downloadable version in BETA)

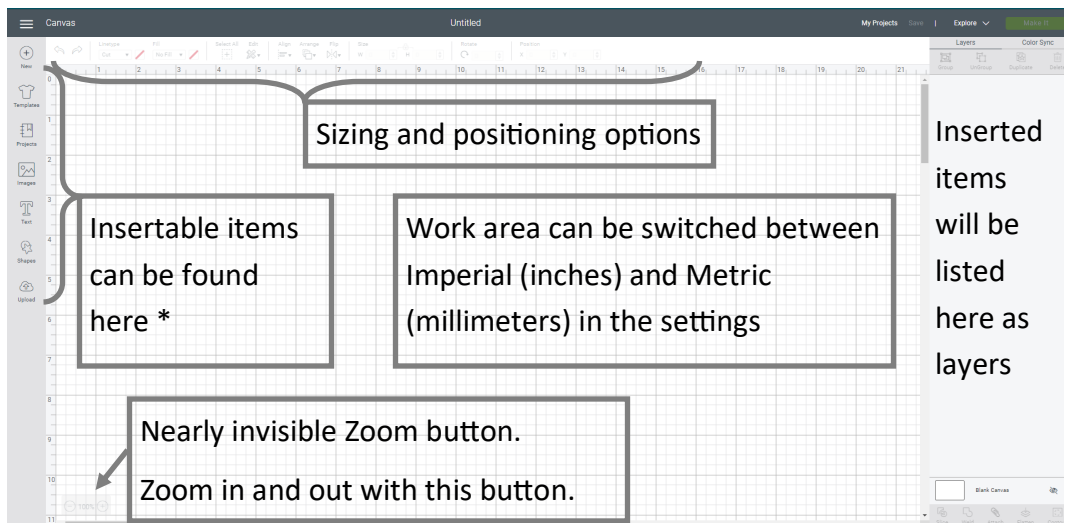
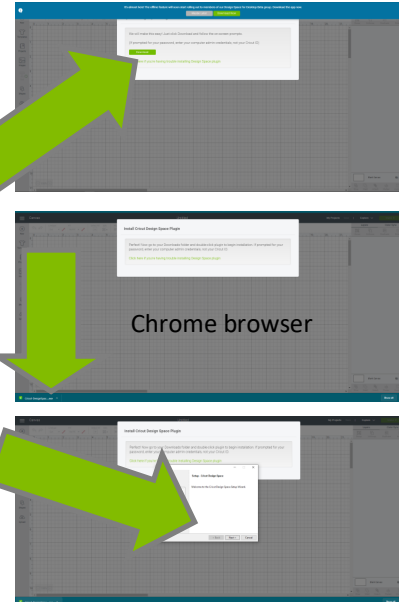
The software is free to use with **some** free options for designs

After creating an account and signing in click on **New Project** and **install the Plug In** by clicking on the green button in the white text box (the top blue bar is to download the BETA version)

After the download is finished, you'll need to click on the download to run it. This will open a series of text boxes for you to click through. After the final text box, your download will complete and the screen will go from grayed-out to white.

Cricut software has been going through some changes lately and this might not be the final setup.

<https://design.cricut.com>



- **Templates** will NOT be a part of your project but can give you a starting point and reference for the project you are trying to create
- **Projects** give you ideas
- **Images** is full of images to insert into your design (there is FREE options in both categories and filter)
- **Text** will open a box to type in. It will also open new options on top to change font, font size, spacing, and alignment
- **Shapes** are basic shapes that can be inserted for backgrounds or cuts
- **Upload** will let you upload your own image for print and cut or just cut

Inserted items will be listed here as layers

## Inserting :

Each item you insert on the grid will have an option for **LINETYPE** to **CUT**, **DRAW**, or **SCORE**. These options are found at the top left and can be used by clicking on an object and changing the linetype or by clicking on an object from the list of inserted objects on the right and changing linetype

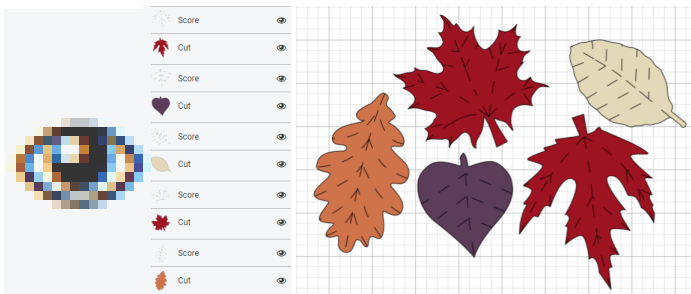
**Images:** Begin by clicking on the Images button You can find free images by clicking on Categories and choosing **Free This Week** or by clicking on Filter and checking the Free checkbox. By changing the filter to free, you can then type in your design topic and get free results.



Click on the image or images you'd like to insert and click on the **INSERT IMAGES** button found at lower right.

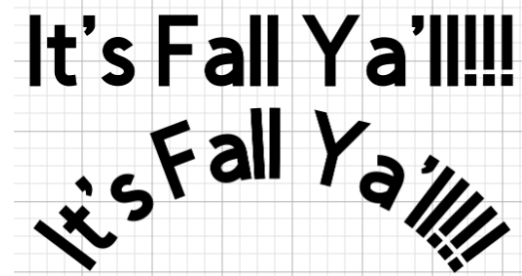


Some images are a selection of smaller images. You can choose the images you want or want to remove from this selection by clicking on the **eye** in the list of items on the right side of screen.



Since these leaves are different colors, they will cut on different sheets. To cut all on the same sheet, use **Color Sync**. Color sync lets you click and drag items to the same colors to cut on the same sheet.

**Text:** Clicking the Text button will open a text box [Add text here] on the grid. Type what you'd like into the box. It will also open font choices, styles and sizes on the top. In font choices, you can choose from All, System, or Cricut. System are the fonts found on your computer and Cricut are the fonts sold by Cricut.



Other text settings found here are alignment; align your text to left, right, or center and curve.

**Shapes:** These are basic shapes that you use as they are, to add to backgrounds and to cut text or designs out of. Just insert a shape and use the size tool to get the correct size.



**Upload:** Here you can upload an image from you computer. After selecting your image, you will be given three choices for your image type; Simple, Moderately Complex, or Complex. After making your selection a new screen will open letting you make adjustments to your image. There are three tools to help make your adjustments.



The magic wand, the eraser, and the cropping tool. Clicking with the magic wand will remove selections of your image by color that are connected. The eraser tool lets you erase what you like and the cropping tool allows you to cut your image size down.

**Other Tools:** **Slice** lets you select multiple images and cut one from the other. **Weld** lets you select multiple images and stick them together creating a new shape. **Attach** is used like a group tool, where it will attach items together to move as one single object.